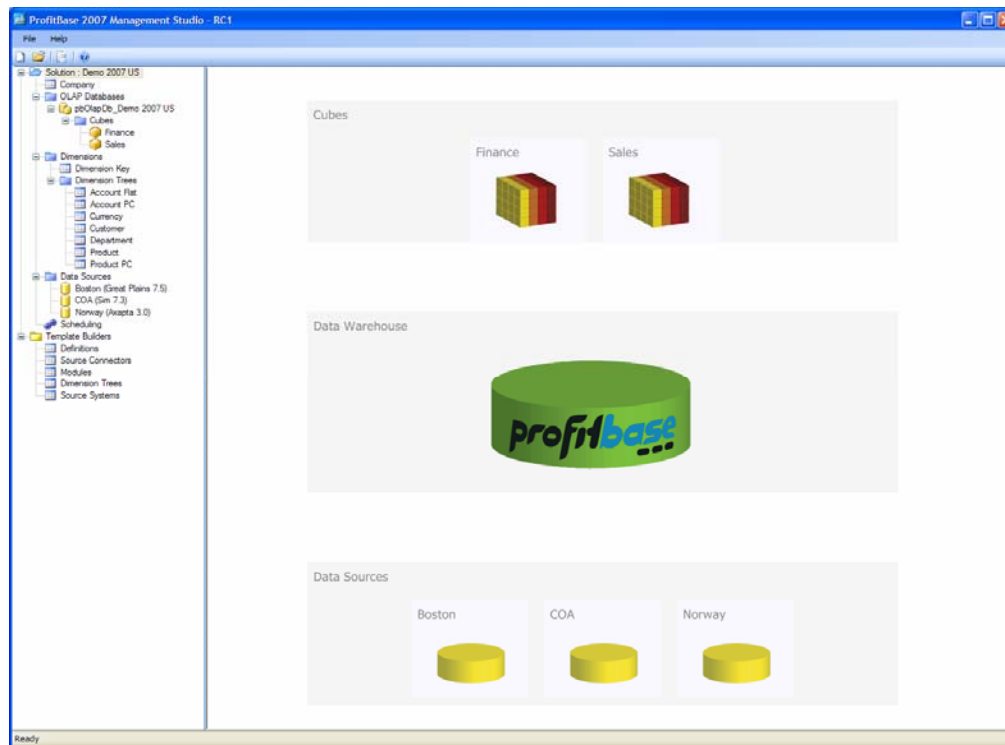


ProfitBase 2007

Data Warehousing made easy

Do you need to consolidate your ERP data with the data from your other business systems to get one view of performance? Do you think it will take a custom development project that will consume your budget, your limited IT staff and your business managers? Think again!

ProfitBase 2007 is an easy-to-use, configurable Microsoft SQL Server data warehouse solution that does not require any programming of DTS or SSIS packages. The bottom line is you do not need a data warehouse expert, it's that easy. And to make it even faster and easier, ProfitBase 2007 has an intuitive toolset to create connectors so that you can easily extract data from your ERP database and also other business systems. In addition, ProfitBase 2007 has pre-built Finance and Sales cubes, which means that you will be viewing data in your favorite dashboard, report writer or scorecard in no time at all.



ProfitBase 2007 Management Studio

Benefits

- Reduced risk
- Faster implementation timeline
- Your data warehouse automatically stays synchronized with your business information requirements because it is configurable and updated in a few hours rather than weeks or months
- Leverages your investment in your ERP system, SQL Server and MS Office technologies
- Quickly build your own database connectors or use pre-built connectors

Key Features

- Configurable - no DTS or SSIS programming is required
- Graphical configuration environment
- Save your integration connectors for future use
- Wizards for fast and easy configuration of all connectors and templates
- Visibility to warehouse content and rules
- Scheduling of automatic data warehouse and OLAP updates
- Over 200 pre-built financial KPI's

ProfitBase 2007

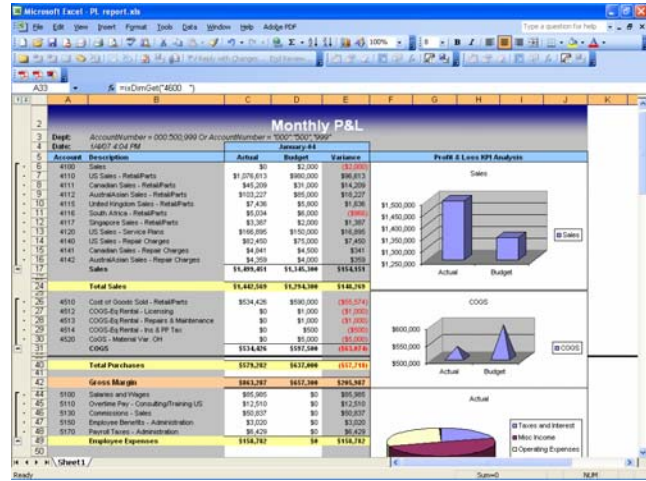
Data Warehousing made easy

Reporting tools for ProfitBase 2007

XL Reporter

It's Microsoft Excel-based. It's easy-to-use and, it is affordable! What's more, anyone can create professionally formatted Excel reports with drill-down capabilities in seconds. Just use the drag and drop design function to develop simple transactional reports or advanced financial statements whenever you need it. Best of all, minimal training is required to implement XL Reporter as your new ProfitBase 2007 Data Warehouse report writer.

Take advantage of this powerful reporting tool for all your reporting needs and be prepared for XL-lence!



Sample P&L Report



Dashboard Example

Interactive Dashboards

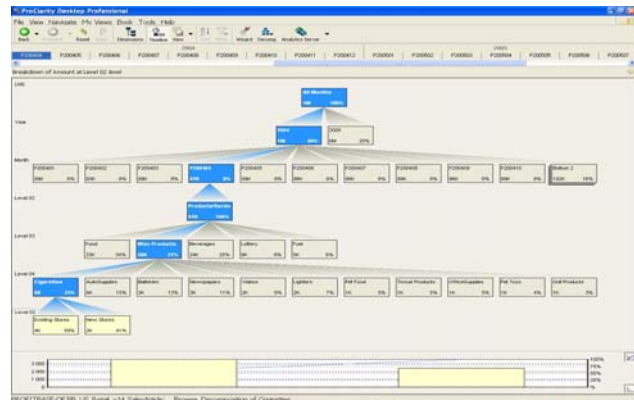
Dashboards have emerged as the ultimate executive user interface to monitor internal and external key performance indicators and other important operational information. Interactive Dashboards provide a powerful and user-friendly way for managers to analyze and present important corporate information without having to use report writers to run reports or learn OLAP analysis tools.

Let Solver help you quickly design and deploy slick dashboards that are tailored to the specific needs of your organization.

Microsoft ProClarity

When you review your numbers have you ever needed to answer questions like Why, When, Where and What? **Microsoft ProClarity** is the tool of choice for ad-hoc reporting and analysis on your data warehouse.

Microsoft ProClarity is also a key component of the new business intelligence suite from **Microsoft, Performance Point Server (PPS) 2007**.



ProClarity Decomposition Tree Example